



2017 ANNUAL REPORT





CONTENTS

Statement of Purpose	1
Chair & CEO's report	2
Where we work	4
Our programs	7
Partnerships	22
Financials	27
Our wantoks	37
Contact us	41



KTF is an Australian not-for-profit organisation registered with the Australian Charities & Not-for-profits Commission. KTF is a member of the Australian Council for International Development and adheres to the ACFID Code of Conduct. Complaints relating to a breach of the ACFID Code of Conduct can be made to the ACFID Code of Conduct Committee. KTF holds base level accreditation with the Australian Department of Foreign Affairs and Trade and is endorsed as a Deductible Gift Recipient. Donations of \$2 and over are tax deductible in Australia.



STATEMENT OF PURPOSE AND INSPIRATION

We work with people and communities to improve the lives
and futures of Papua New Guineans

TO KEEP THE SPIRIT OF KOKODA ALIVE

CHAIR & CEO'S REPORT



Ian Kemish AM
Chair

2017 was the 75th anniversary of the Kokoda Campaign and a time to reflect on the great friendship and bond that was forged between Papua New Guinea and Australia in WWII. This bond is just as strong 75 years on, and we at KTF are motivated to keep the spirit of Kokoda alive in ways that are tangible, and that recognise the strength of the mateship that was born out of courage, sacrifice and endurance in PNG all those years ago.

Our purpose is to work with people and communities to improve the lives and futures of the people of PNG. 2017 saw us expand many of our development activities to communities right across PNG and today we have a presence in 16 of PNG's Provinces, and relationships with provincial governments, communities, women's groups, schools and young leaders which enable us to, in partnership, affect change.

During the year in review, we expanded our Teach for Tomorrow project to ten Provinces across PNG, training 2,290 elementary teachers for remote and rural schools. This partnership with National and Provincial Departments of Education, the PNG Education Institute, communities, schools, trainers and teachers was made possible by tremendous generosity from PNG and Australia's corporate, philanthropic and government sectors. Those partners helped us to train all these teachers, keeping literally thousands of schools open and over 70,000 children in school.

As we look to the future, we are excited about the next stage of Teach for Tomorrow, our further expansion across PNG, and our ongoing commitment to the Kokoda Track catchment region. 2018 will be a year in which we further progress the resourcing of the Australian and PNG chapters of the organisation to ensure that all program expansion is properly supported, the capacity of our teams is grown, and our

impact is measured. Communities across the nation continue to struggle to access basic education and primary healthcare – especially in regions that are difficult to access. We stand poised to work in partnership with local, provincial and national governments, leaders and their communities, and schools and health facilities to improve access to those services that are vitally important to lifting people out of poverty

2017 saw the resignation of our long-time chair and director, Patrick Lindsay AM, and we thank him wholeheartedly for his extraordinary commitment to KTF, the people of PNG, and to keeping the spirit of Kokoda alive. We are grateful to all our directors, committee members, staff and volunteers in PNG and Australia for their dedication, innovation and enthusiasm in the face of challenge; and we welcome new director and company secretary, Peter Barrow, to the team in 2018 who replaces long-standing company secretary, Salman Haq.

None of our work would be possible without the generosity of the Australian and PNG philanthropic and business communities, the PNG and Australian Governments, and the passionate people in Australia and PNG who are committed to honouring the friendship between our nations and keeping the spirit of Kokoda alive. We thank you for your generosity – of time, money and resources – and your ongoing moral support.

*They were there for us in
our darkest hours...
NOW IT'S OUR TURN
TO LEND A HAND.*

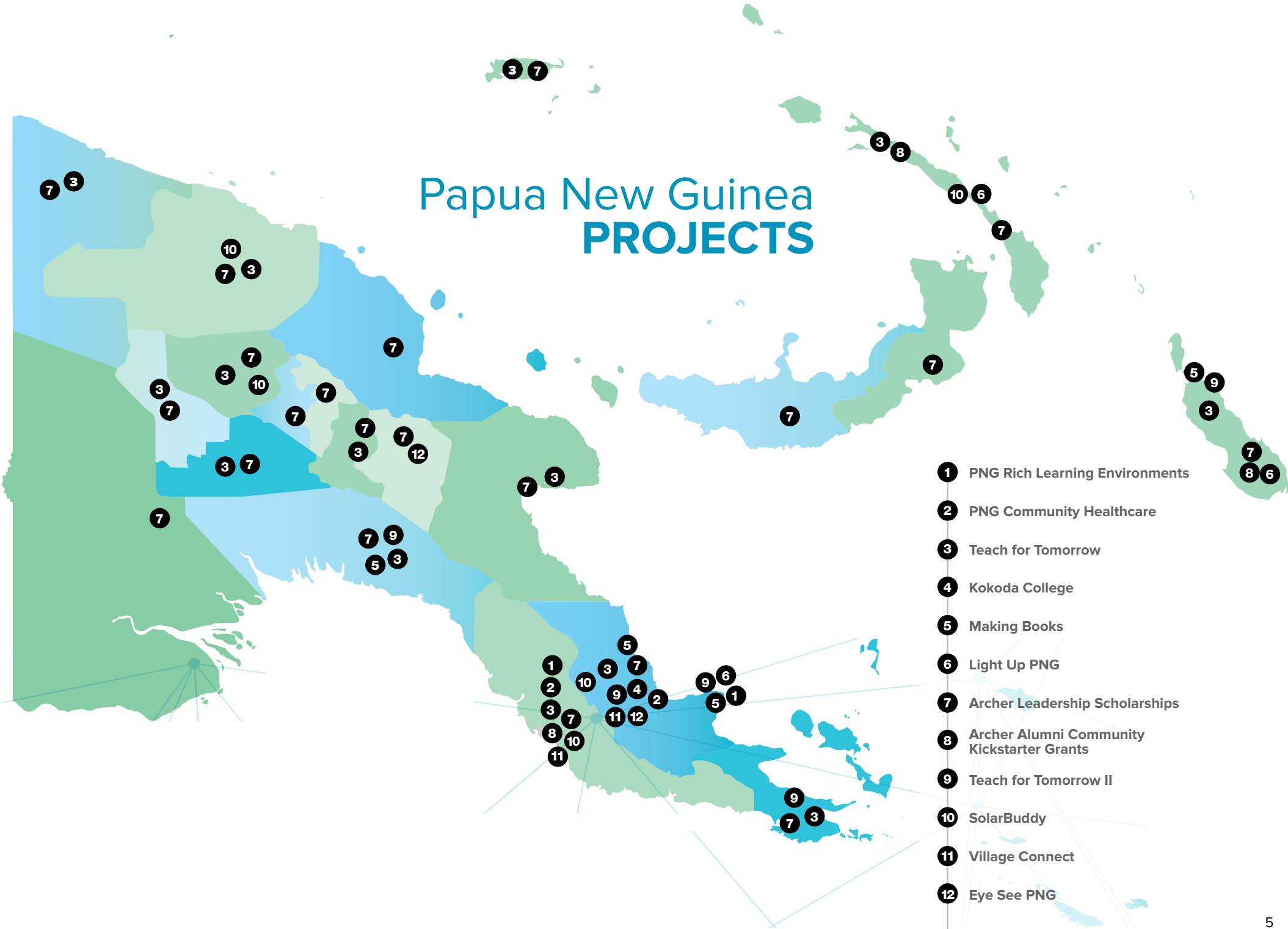


Genevieve Nelson
CEO

An aerial photograph of a tropical coastline. The top half shows a dense green forest with several small buildings or huts. The bottom half shows a clear, turquoise ocean with a sandy beach. A dark blue, semi-transparent overlay covers the bottom left corner, featuring a white network diagram with nodes and connecting lines. The text 'WHERE WE WORK' is written in white, uppercase letters on this overlay.

WHERE WE WORK

Papua New Guinea PROJECTS



- 1** PNG Rich Learning Environments
- 2** PNG Community Healthcare
- 3** Teach for Tomorrow
- 4** Kokoda College
- 5** Making Books
- 6** Light Up PNG
- 7** Archer Leadership Scholarships
- 8** Archer Alumni Community Kickstarter Grants
- 9** Teach for Tomorrow II
- 10** SolarBuddy
- 11** Village Connect
- 12** Eye See PNG

PNG Schools Project

Healthy Communities

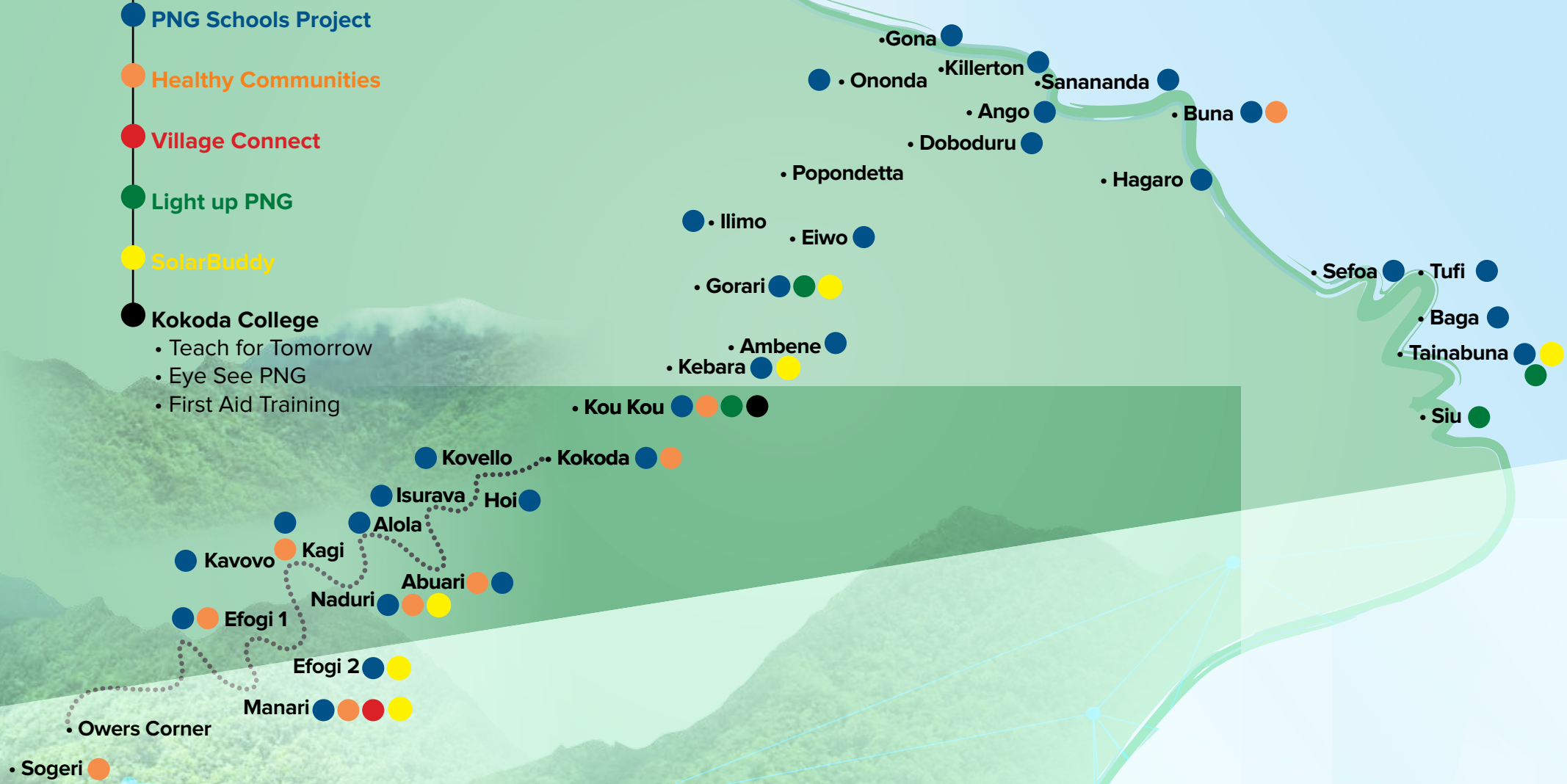
Village Connect

Light up PNG

SolarBuddy

Kokoda College

- Teach for Tomorrow
- Eye See PNG
- First Aid Training





OUR PROGRAMS

education • health • livelihoods • leadership



EDUCATION



“ [This training] is like having my dreams come true. It is another step forward towards my goals. It means moving onto the next level in my teaching profession... I want to be a qualified teacher with my experience of early childhood teaching and proceed to higher levels in the teaching field. I will commit to another 30 years in the teaching profession because I want my fellow citizens in my community, province, and country to be educated.”

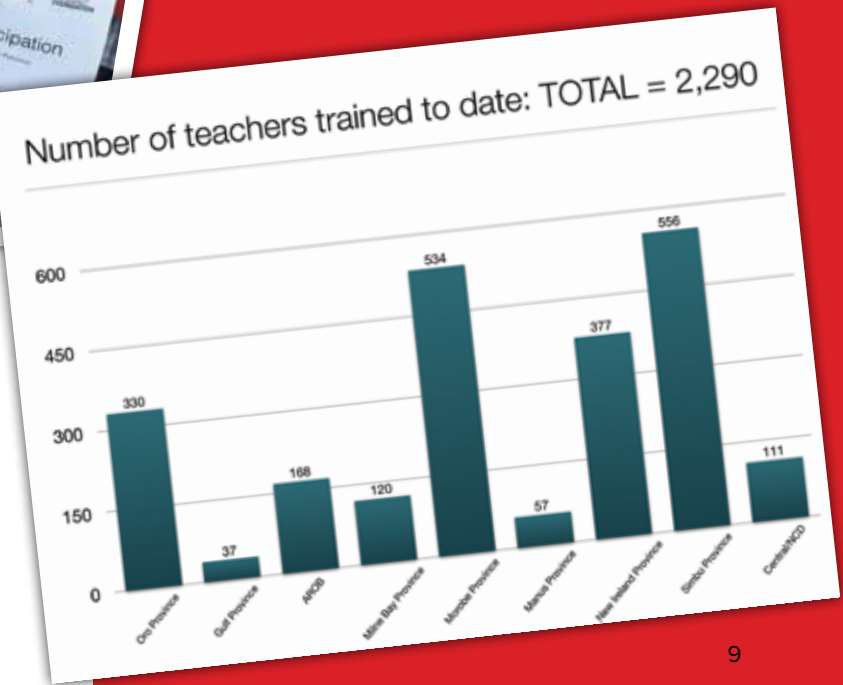
Simon Tiori,
Teacher at Salapiu Elementary School, Salapiu Village

TEACH FOR TOMORROW

In 2016, KTF identified a national education crisis unfolding. Due to changes in the training and certification process of elementary teachers, thousands of partially-trained elementary teachers across PNG were at risk of being exited from the teaching profession if they were not given the opportunity to complete their training, some of whom had been waiting for this training for up to two decades.

In response, KTF embarked on its largest teacher training project to date – Teach for Tomorrow. In partnership with the National

Department of Education, Papua New Guinea Education Institute and various Provincial Departments of Education, KTF has now trained 2,290 elementary teachers across 10 Provinces in PNG - Oro, Gulf, Morobe, Milne Bay, Manus, New Ireland, Simbu, NCD and Central Provinces and the Autonomous Region of Bougainville.





“ Thank you to KTF and all its partners for helping us deliver the teacher training to New Ireland.

One important aspect of the training was the literacy module. We talked about phonics, blending parts, and segmenting. In the past we haven't gone through these areas.

The trainees understood how to plan and how to teach. The teaching aids were important for them to teach effective lessons. They learned to have a lesson plan and then have their teaching aids done before teaching. They knew how to write a lesson, but when it came to the literacy part, they didn't know how to be clear to the students. The students couldn't understand the literacy teaching. This is an area they need to plan so that the students can understand the sounds and phonics and stringing words together.

There were a lot of things that stood out to me as a trainer. Learning about the administrative part of lessons was very

valuable to the trainees. An area often overlooked with training teachers across PNG is the administrative responsibilities of managing the school, this is particularly important as a large number of schools in remote areas are single teacher schools. The administrative chapter of the SIU booklets was particularly helpful in instructing teachers how to implement the operations and management structures of their schools. The SIU books were very valuable; we told them to refer to those books when they need assistance.

I now believe the teachers we trained are prepared to implement what they have learned. I should say, they now have the confidence they need to teach, advise their boards of management, and stand up for what they believe is right in their schools.

I am really grateful, and send thanks to KTF for coming to our assistance.”

Domitila,
New Ireland Provincial
Elementary Teacher Training Coordinator.

“ I am Jacklynne and I have been teaching Elementary Grade 2 students at West Fergusson Elementary School, Fergusson Island. I have 24 students in my class. In total, we have 89 students in this school with three elementary teachers.

I am so very thankful for KTF and its partners for their contribution and funding. It has given us an opportunity to be able to complete our training to get our Certificates of Elementary Teaching. I am very happy that I now know how to plan my lessons for the Standards-Based Curriculum.

When I return to my school I will be conducting in-service training for my colleagues and will share all the new information and knowledge that I have learnt. KTF's presentations helped me to plan more child-centred learning activities and we are still talking about how you explained things so clearly to us.”

Jacklynne,
Trainee, West Fergusson
Elementary School

BUILDING RESILIENT SCHOOLS

KTF takes a holistic approach to its work in education, supporting a broad number of initiatives that enable children in rural remote areas across PNG to access a quality education. Effective learning environments are created when there is suitable infrastructure, a qualified and motivated teacher, an engaged school board and adequate learning resources. In 2017, via our PNG Schools Project, we supported 48 elementary and primary schools across the Central and Oro Provinces with school resources, teacher postings, water and sanitation, and classroom maintenance. KTF works closely with its development partners to ensure that the most effective learning environments are created for the communities along and around the Kokoda Track.

KTF has supported Isurava Elementary School for the past 5 years, enabling all school-aged children in the village to enrol and remain in school. In 2017, this support included the postings of two elementary teachers - Lindy and Ismael - who also completed the final stages of their Certificates of Elementary Teaching via our Teach for Tomorrow project. We also provided a regular supply of school stationery and teacher resources. Student numbers at Isurava Elementary continue to increase every year due to the work that Lindy and Ismael do with the community and teaching them about the importance of sending children to school at the appropriate age.

TRAINING THE NEXT GENERATION



Carved out of the jungle, the Kokoda College is enrolling and training students from across Oro, Central and Western Provinces to upgrade their school leaver qualifications from Grade 10 to Grade 12. This will enable our students to meet new minimum entry requirements for further tertiary study in education and health, and enrol in the College's School of Education and School of Health from 2019. 47 students are enrolled in the College program.



HEALTH

EYE SEE PNG

Via our new Eye See PNG project, KTF worked with its partners at the Brien Holden Vision Institute and PNG Eye Care to develop a postgraduate training course on eye healthcare. The course is tailored to and written specifically for Community Health Workers based in remote aid posts to help them identify refractive error and eye disease and provide referral pathways for people in need. It is a first of its kind for PNG and in 2017, KTF trained 30 community health workers from Oro and Central provinces at the Kokoda College in July. After the resounding successful pilot, an additional 20 CHWs from across the Highlands region were trained in Goroka. 50 communities across PNG now have access to a health worker with improved eye health qualifications.



LOOKING AHEAD

“ I attended the Eye See PNG training workshop in October 2017 at the Kokoda College. I have been working as a CHW for many years and have never received this type of specialty training before - it is a first of its kind here in Papua New Guinea. During the training program I was given knowledge and skills to test and treat patients with eye issues. I was given resources to assist me do this in my aid post such as eye testing charts, pen lights and eye testers - all of which will go a long

way to supporting my work. Since attending the training I have tested and treated many patients with eye issues and have also been able to accurately refer patients to the local hospital for further treatment.”

Ronu,
Community Health Worker,
Kou Kou

Moving forward, we will continue to work with our partners to ensure as many health workers in remote and rural PNG receive speciality training in eye health. Whilst some referral pathways currently exist for people with eye disease or refractive error, many communities in remote areas do not have referral pathways easily available. In 2018, we will pilot a new initiative to provide glasses to people with refractive error in rural areas.

HEALTHY COMMUNITIES



KTF continues to support the provision of quarterly drugs and medical resources to nine aid posts and health centres across the Central and Oro provinces as well as the Kokoda Hospital. In 2017, KTF supported the postings of eight Community Health Workers in the Kokoda Track catchment region - Alice and Lance in Efogi, Guy in Abuari, Ronu in Kou Kou, Iori in Sogeri and Rodney, Onesmus & Colin in Buna. Our healthy communities project enabled over 15,000 people to have access to reliable primary healthcare.

Buna Aid post was constructed by KTF in 2013. Since then, KTF has paid the salaries of two health professionals and supplied the facility with quarterly supplies of resources. In 2017, due to a continued increase in the demand for healthcare in the region, KTF welcomed a third health professional to meet the need and increased the provision of medical supplies. “We see up to 700 patients some weeks who travel from 15 different communities to Buna in search of healthcare. In addition to medical treatment at the health centre, we also provide a health education program to Buna locals, run pre and post natal classes and attend to emergencies. We are so grateful for KTF’s assistance and we honestly wouldn’t be able to keep the doors open if it wasn’t for this support.” Onesmus, Community Health Worker, Buna.



LIVELIHOODS

LIGHT UP PNG

The lack of reliable light limits people in undertaking daily activities such as business, reading, schoolwork, and household chores. It also increases safety and security risks for families as darkness provides an easy cover for crime during the night. Solar lighting and energy technology presents a significant opportunity to provide clean, sustainable and affordable lighting solutions to off-grid communities in PNG. KTF worked with women's groups across the country in 2017, establishing and supporting sustainable solar businesses from which women earn a reliable income. In 2017, we worked with eight women's groups across New Ireland and Oro Provinces and the Autonomous Region of Bougainville.

6.3MILLION
PAPUA NEW GUINEANS LIVE
WITHOUT ACCESS TO THE
ELECTRICITY GRID

The training and support workshops delivered as part of KTF's Light Up PNG project helped Ellen, from New Ireland Province in remote PNG, become aware of important business concepts such as having market goals and time frames to meet them, knowing how to calculate her expenses, income and profit. At the community level everyone was eager and excited about the sale of solar lights. Not only did Ellen assume the role of leader within her women's group, she herself invested in the purchase of a number of solar lights.

“ *The lights helped my family to cook and prepare business activities at night as well as provide safety for my family after dark. I don't need to worry about paying for expensive lamp batteries, saving me money in the long term.*”

Ellen now has access to alternative income generating opportunities that can be conducted in her spare time, allowing her to still focus on subsistence farming and supporting her family. “*Thank you to KTF for your generous support of our women's group.*”

Ellen Group Leader,
Kimaden Women's Group, New
Ireland Province, PNG.



SOLARBUFFY

In partnership with KTF's charity partner, SolarBuddy.org, KTF distributed over 3,500 solar lights to children across PNG during 2017. To date, we have distributed over 7,500 lights to children, teachers and women's groups. Solar lights reduce reliance on toxic kerosene and dangerous campfires, keep women and girls safer in their villages after the sun goes down, and enable children to complete their homework after dark.



“We are incredibly proud to be partnering with KTF and lighting up the lives of thousands of children across PNG. Solar energy solutions transform lives, economies and the planet; children can study for longer after dark having a dramatic and hugely positive impact on their learning experience.”

Simon Doble,
CEO, SolarBuddy.

“Life in my village after the sun goes down is darkness. There is no electricity and it is hard to read & study. This light will bring great change. I use it to improve my education and that education will improve my future and the future of my family.”

Immogen, Grade 8,
Par Primary School, Enga Province.

VILLAGE CONNECT

In 2017, we began our new Village Connect project and installed solar powered household lighting and energy systems onto 77 houses in Manari village along the Kokoda Track. With only 5% of the PNG rural population connected to the electricity grid, these kits provide an energy source to charge phones and radios as well as three indoor lights and one extra bright outdoor light.

KTF Ambassadors the Cronulla Sharks assisted with the installation:

“ Firstly the Cronulla Sharks are honoured to be involved with KTF and the work they do in PNG.

The highlight of our relationship was on our 2017 trek to Manari village to install solar lights to 77 huts within the village. By day three after a couple of days of hard trekking when we reached Manari the group found its inspiration by the smiles and warmth of the people living in Manari. To see some shed a tear because they could now see at night to the beautiful singing of the school children, no greater emotion can be found than what we experienced that day in Manari and to create history as the first village along the Kokoda track to be given light.”

Shane Smith,
Football Operations Manager,
Cronulla Sutherland Football Club



ORO

LEADERSHIP



FINDING & FOSTERING

KTF is finding and fostering the next generation of PNG leaders via its Archer Leadership Program. Based on Harvard's Adaptive Leadership theory, the program took 7 young leaders on an intensive, experiential leadership development journey in 2017 taking our alumni to 42. Archer Leaders participated in intensive leadership development sessions in PNG and Australia. They traveled to Sydney and Melbourne for a two-week exchange program where they were put into challenging situations analysing some of the most pressing

social issues facing both nations. They met great leaders from all walks of life, completed work experience and were provided with professional development and educational resources to assist them in their ongoing leadership journey. The leaders were matched with high-profile mentors who they worked with closely throughout their final year of university. The Archer Leaders are also given a grant to spend on their own community development project, allowing them to create positive change right across PNG.

...THE NEXT
GENERATION OF
LEADERS

“ Being in the Archer Program has really been a journey of self-discovery, but most importantly it's helped me change my mindset. I've always thought of things at the local level... but throughout the Archers journey, I've developed the perspective of also thinking globally... and I've had a shift in mindset that I'm not just making a difference to communities, but also to the world as a whole.”

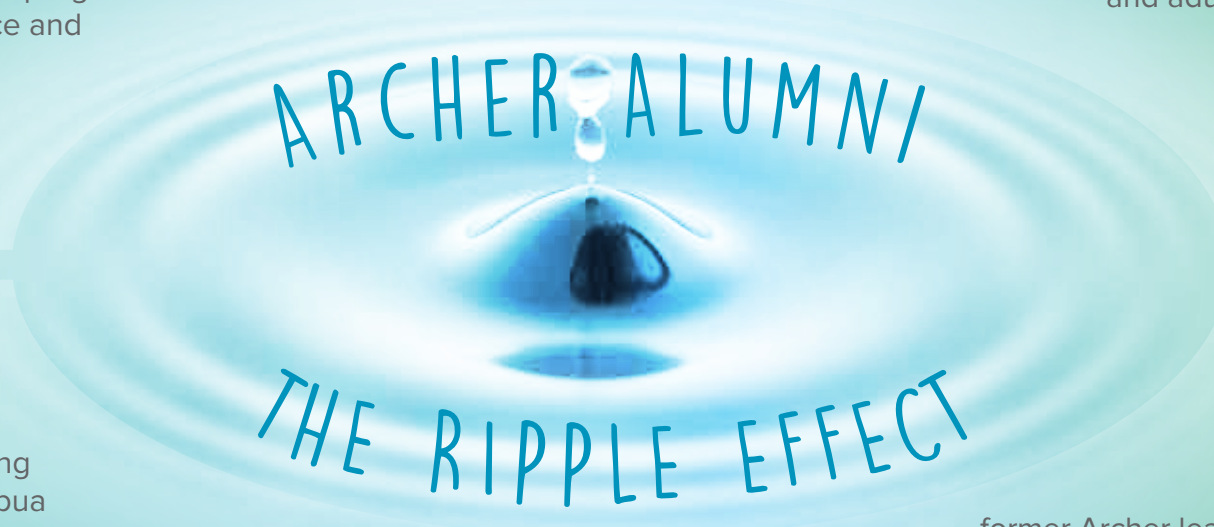
Lydia Dimokari,
2017 Archer Leader

UNIMUMS

established by former Archer Leader, Tess Gizoria, UniMums provides psycho-social support and mentoring to young mothers and pregnant women at university in PNG. The program enables young women to continue with their studies, undertake extra tutoring activities, seek support from their peers, access physical resources such as baby goods, and run outreach programs on domestic based violence and young mother support.

HAISI LIBRARY

former Archer leader Eleanor, constructed, stocked and opened a library in the very remote village of Haisi in southern Bougainville. Eleanor is committed to not only providing the surrounding communities with access to library books but to also have the library as a centre of excellence in literacy, offering children a safe place to study and adults a new place to learn.



BEHIVE

an online mental health resource providing assistance to young Papua New Guineans. Behive is an initiative of former Archer Leader, Sebangaz Siming, and is the first of its kind in PNG. The website is dedicated to providing information, support and pathways to young Papua New Guineans dealing with mental health challenges.

SOAP PROJECT

former Archer leader Richard has launched the Sustainable Opportunities After Prison project in partnership with Kavieng Women's Prison in the New Ireland Province. The project seeks to upskill female inmates in the process of making soap out of sustainable materials that can be collected from the surrounding environment. The soap will be sold across PNG with all profits coming back to improve living conditions for the inmates. Upon release from prison, the women will be provided with a soap making kit to take home and assist with rehabilitation by providing income generating opportunities.

UNIMUMS, BEHIVE, HAISI LIBRARY AND THE SOAP PROJECT are all initiatives of Archer alumni funded and supported by KTF's Community Kickstarter Grants. Other grants including a cancer database in partnership with the PNG Cancer Foundation and a student mentoring program.



PARTNERSHIPS

FINANCIAL PARTNERS

"TENKYU TRU" TO OUR PLATINUM PARTNERS

The James Family



Australian Government
Department of Foreign Affairs and Trade

Perpetual 



FLIGHT CENTRE
FOUNDATION



SOLARBUFFY.ORG
A NOT FOR PROFIT



englishfamily
FOUNDATION



Australian High Commission
Papua New Guinea



L'OCCITANE
EN PROVENCE



NEWCREST
MINING LIMITED

ExxonMobil



MUNDANGO
ABROAD



FINANCIAL PARTNERS

"TENKYU TRU" TO OUR GOLD, SILVER AND BRONZE PARTNERS

GOLD

- The Funding Network
- Web of Hope Foundation
- Peta Seymour Foundation
- International SOS
- Steamships
- Donnellan Family
- Lions Club of Park Orchards
- SEAM Fund
- Patrick Lindsay & Lime Tree Studios
- RSL & Services Clubs Association
- Susan Varga
- Generous contributors to the George & Josie Palmer Fund

SILVER

- Aztech Services
- Rotary Club of Blaney
- Geoff Applegate
- Bougainville Copper Limited
- Peters Family Foundation
- Victoria Police Wyndham
- Back Track Adventures
- Executive Excellence
- Department of Veteran Affairs - staff giving
- Getaway Trekking
- AustAsia Pacific Health Services
- Andrew Whyte
- The Brown Family
- LEK Consulting
- Rotary Club of Tumbarumba
- Wendy Brooks & Partners

BRONZE

- Bernie Egan
- Victoria Police, Geelong Youth Program
- Intrepid Foundation
- SW Gardiner
- HE Bruce Davis
- Murphy Family Foundation
- Graham & Charlene Bradley
- Beverley Prior
- Peter Parry
- Cassie Soertsz
- Devin Marshall
- Frankston RSL
- Dubbo RSL
- Altona RSL
- Compton Green
- Campsie RSL
- Hervey Bay RSL
- Currumbin RSL
- Jeff Forest
- Muswellbrook RSL
- Lone Pine Barracks
- Patrick Desmond
- Cabra Vale Surf Club
- Bathurst RSL
- Canterbury Hurlstone Park RSL
- Lonsdale Queenscliff RSL
- Westpac Group
- Cronulla RSL
- John Chase
- Rod McEwin
- Salman Haq
- Neil Scott Lawyers

INKIND PARTNERS

"TENKYU TRU" to our wonderful in-kind supporters who give up their time and services to assist KTF



The James Family

“ Airways Hotel provides all of KTF’s accommodation and event needs in Port Moresby. From hosting KTF staff to providing pro bono venue spaces for conferences, meetings and events, Airways always feels like a second home for staff passing between Australia and PNG. Airways Hotel also generously sponsors KTF events with contributions to silent auctions.

“ L.E.K Consulting continues to work closely with KTF in a multifaceted way. Following on from writing KTF’s Strategic Plan in 2016, L.E.K hosts an annual staff trivia night, raising thousands of dollars for KTF. In addition to this, L.E.K generously provides pro-bono consulting services - from mapping out three exciting social enterprises for consideration to evaluating leadership projects. L.E.K have provided pro-bono office space in Sydney & Melbourne for cocktail events, attended KTF events and have had staff trek the Kokoda Track with KTF.”

CO-DELIVERY PARTNERS

Throughout 2017, KTF has formed many new partnerships with provincial education authorities and other in-country NGOs and organisations throughout PNG. KTF holds these co-implementing partners in high esteem and looks forward to a fruitful and ongoing relationship.

Oro
Department of Education



Gulf
Department of Education



Bougainville
Department of Education



Milne Bay
Department of Education



Morobe
Department of Education



Manus
Department of Education



Simbu
Department of Education



Central
Department of Education



East Sepik
Department of Education



New Ireland
Department of Education





FINANCIALS

CONSOLIDATED STATEMENT OF COMPREHENSIVE INCOME FINANCIAL YEAR TO 31 DECEMBER 2017

REVENUE	2017 (\$)	2016 (\$)	EXPENDITURE	2017 (\$)	2016 (\$)
DONATIONS & GIFTS			INTERNATIONAL PROGRAMS		
• Donations	1,545,491	907,115	Funds to International		
• Ralph Honner Oration Dinner	121,213	114,894	• Education	1,032,511	604,736
• Kids of Kokoda Lunch	21,385	44,360	• Health	225,544	114,278
Total	1,688,089	1,066,369	• Livelihoods	220,569	42,272
GOVERNMENT GRANTS			• Leadership	164,750	150,897
• DFAT (ANCP)	433,289	150,000	• Program Support Costs	88,741	77,793
• DFAT (AHC)	107,920	62,075	FUNDRAISING COSTS		
• Other (overseas)	-	103,519	PUBLIC EVENTS		
• Other Income	7,078	9,836	• Ralph Honner Oration Dinner	53,867	44,318
TOTAL REVENUE	2,236,375	1,391,826	• Kids of Kokoda	12,200	18,617
			• General Fundraising	111,556	114,892
			• Accountability & Administration	180,838	102,899
			TOTAL EXPENDITURE	2,090,576	1,270,702
			EXCESS/(SHORTFALL) OF REVENUE		
			OVER EXPENDITURE	145,800	121,124

CONSOLIDATED STATEMENT OF FINANCIAL POSITION

AS OF 31 DECEMBER 2017

	31 December 2017 (\$)	31 December 2016 (\$)
ASSETS		
Current assets		
• Cash and cash equivalents	963,575	912,801
• Trade and other receivables	320,201	19,757
Total current assets	1,283,776	932,558
Non-current assets		
• Property, plant & equipment	4,097	-
Total non-current assets	4,097	-
TOTAL ASSETS	1,287,873	932,558
LIABILITIES		
Current Liabilities		
• Trade and other payables	133,748	43,820
• Deferred income	119,587	-
Total current liabilities	253,335	43,820
TOTAL LIABILITIES	253,335	43,820
NET ASSETS	1,034,538	888,738
EQUITY		
Retained Earnings	1,034,538	888,738
TOTAL EQUITY	1,034,538	888,738

CONSOLIDATED STATEMENT OF CHANGES IN EQUITY

	Accumulated Funds
	\$
Balance at 1 January 2016	767,614
Surplus for the year	121,124
Balance at 31 December 2016	888,738
Balance at 1 January 2017	888,738
Surplus for the year	145,800
Balance at 31 December 2017	1,034,538

CONSOLIDATED STATEMENT OF CASHFLOWS

	2017 (\$)	2016 (\$)
Cash flows from operating activities		
• Receipts from members, donors, fundraising activities	2,001,929	1,367,372
• Payments to suppliers and employees	(1,953,490)	1,275,951
• Net cash (used in)/provided by operating activities	48,439	91,421
Cash flows from investing activities		
• Payments for Property, Plant and Equipments	(4,744)	-
• Interest received	7,078	9,863
• Net cash provided by investing activities	2,334	9,863
Net decrease in cash and cash equivalents	50,774	101,284
Cash and cash equivalents at beginning of financial year	912,801	811,517
Cash and cash equivalents at end of financial year	963,575	912,801

TABLE OF CASH MOVEMENTS FOR DESIGNATED PURPOSES AS OF 31 DECEMBER 2017

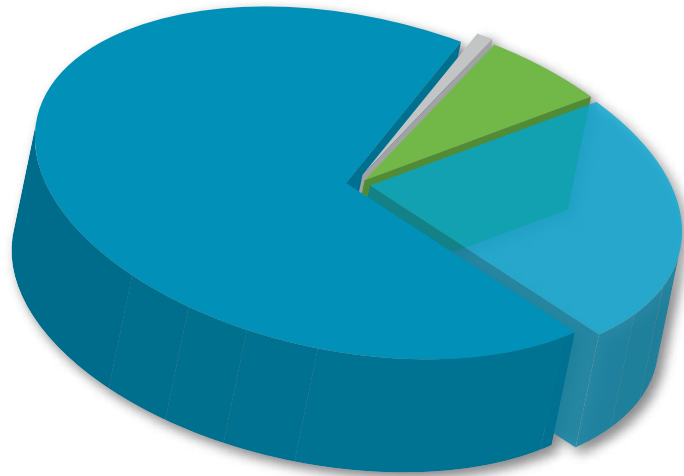
	Cash available at beginning of financial year	Cash raised during financial year	Cash disbursed during financial year	Cash available at end of financial year
Education Program*	0	1,230,064	1,070,492	159,572 ¹
Health Program	0	139,892	239,853	-
Livelihoods Program	24,671	80,687	145,145	-
Leadership Program**	52,815	-	186,874	-
General (non-designated purposes)	823,752	498,414	244,356	804,002
TOTAL	901,238	1,949,057	1,886,720	963,575

*Including Kokoda College: School of Education and Teach for Tomorrow

**Including Archer Leadership Program and Community Kickstarter Grants

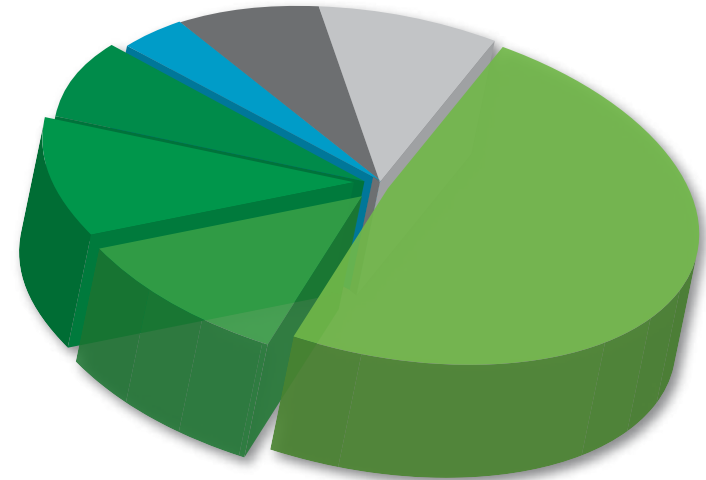
¹ Funds quarantined for KTF's education projects including Teach for Tomorrow and Kokoda College

WHERE THE MONEY COMES FROM



- Donations: \$1,545,491
- Government: \$541,209
- Events: \$142,598
- Other \$7,078

WHERE THE MONEY IS SPENT



- Education: \$1,032,511
- Health: \$225,544
- Livelihoods: \$220,569
- Leadership: \$164,750
- International Program Support: \$88,741
- Fundraising: \$177,623
- Administration: \$180,838

KTF aims to keep its fundraising and administration costs to a minimum. In 2017, KTF applied 83% of its total expenditure to the delivery of its International Development Programs in Education, Health, Livelihoods and Leadership. Administration expenditure (9%) covers unavoidable, regulatory and administrative overheads as well as important investment in staff and management systems. Fundraising expenditure (8%) covers the costs of running KTF's events and appeals, upkeep of its website, and other marketing and communication activities.

DIRECTOR'S DECLARATION

Declaration under the Charitable Fundraising Act (1991)

I, Ian Kemish AM, Chairman of the Board of Directors of The Kokoda Track Foundation Limited declare that in my opinion:

1. The financial statements give a true and fair view of all income and expenditure of KTF with respect to the fundraising appeals activities for the financial year ended 31 December 2017.
2. The statement of financial position gives a true and fair view of the status of affairs with respect to fundraising appeals activities for the financial year ended 31 December 2017.
3. The provisions of the Charitable Fundraising Act 1991 (NSW), the Regulations under the Act and the conditions attached to the authority have been complied with for the financial year ended 31 December 2017.
4. The internal controls exercised by KTF are appropriate and effective in accounting for all income received and applied by KTF from any of its fundraising appeals.

Signed in accordance with a resolution of the directors:



Ian Kemish AM
Chair
Sydney, 28 March 2018

The summary financial reports have been prepared in accordance with the requirements set out in the ACFID Code of Conduct. For further information on the Code, please refer to the ACFID Code of Conduct Guidance document available at www.acfid.asn.au

This financial report is a summarised version of our full audited financial statements. Copies of 2017 financial statements, including the Directors' Report, can be found at www.ktf.ngo

**Alternatively, please contact the KTF office
on 02 9252 2992.**



Report of the independent auditor on the summary financial statements to the members of The Kokoda Track Foundation Limited

The accompanying summary financial statements, which comprises the summary Consolidated Statement of Financial Position as at 31 December 2017, the summary Consolidated Statement of Comprehensive Income, summary Consolidated Statement of Changes in Equity and summary Consolidated Statement of Cash Flows for the year then ended, are derived from the audited financial report of The Kokoda Track Foundation Limited for the year ended 31 December 2017. We expressed an unmodified auditor's opinion on that financial report in our report dated 28 March 2018.

The summary financial statements do not contain all the disclosures required by Australian Accounting Standards- Reduced Disclosure Requirements for a general purpose financial report. Reading the summary financial statements, therefore, is not a substitute for reading the audited financial report of The Kokoda Track Foundation Limited.

Directors' responsibility for the summary financial statements

The directors are responsible for the preparation of a summary of the audited financial report in accordance with the disclosure requirements of the Australian Council for International Development's Code of Conduct.

Auditor's responsibility

Our responsibility is to express an opinion on the summary financial statements derived from the audited financial report of The Kokoda Track Foundation Limited based on our procedures, which were conducted in accordance with Auditing Standard ASA 810 *Engagements to Report on Summary Financial Statements*.

Auditor's opinion

In our opinion, the summary financial statements derived from the audited financial report of The Kokoda Track Foundation Limited for the year ended 31 December 2017 are consistent, in all material respects, with that audited financial report.


KPMG



Daniel Robinson
Partner

28 March 2018

COMPLIANCE & REGULATION

ASIC, ACNC & ATO

As a public company limited by guarantee and a registered charity, KTF is required to comply with the regulations of the Australian Securities and Investments Commission (ASIC) and the Australian Charities and Not-for-Profits Commission (ACNC) Act 2012. This includes complying with Australian Accounting standards and other mandatory professional reporting requirements. The Australian Taxation Office (ATO) has given KTF the status of a Deductible Gift Recipient (DGR) and a Public Benevolent Institution, granted exemption from Income Tax, and provided concession for Fringe Benefits Tax and GST. Reporting requirements comprise mainly annual fringe benefits tax returns, quarterly Business Activity Statements and monthly Pay-as-you-go (PAYG) submissions.



FINANCIAL AUDIT

KTF undergoes an annual audit of its financial statements. KPMG has undertaken KTF's annual audit of financial statements for the past 5 years. KTF publishes its full financial statements on its website www.ktf.ngo and submits these to the ACNC, Australian Council for International Development, and DFAT's Australian NGO Cooperation Program. KPMG has undertaken KTF's audit on a pro bono basis for three years. Since 2017, KPMG undertook KTF's audit at a low bono cost of \$12,500 (excl GST). We are extremely grateful to KPMG for their loyal support.



AUSTRALIAN COUNCIL FOR INTERNATIONAL DEVELOPMENT

KTF is a member of the Australian Council for International Development (ACFID) and a signatory to the ACFID Code of Conduct. ACFID is the peak body for aid and international development NGOs and its code of conduct upholds the highest standards of ethics, effectiveness and accountability. For further information on the Code, please refer to the ACFID Code of Conduct Guidance Document available at: acfid.asn.au. Complaints relating to a breach of the ACFID Code of Conduct, by an ACFID member can be made at the ACFID Code of Conduct Committee (www.acfid.asn.au/code-of-conduct/complaints). tax returns, quarterly Business Activity Statements and monthly Pay-as-you-go (PAYG) submissions.



AUSTRALIAN NGO COOPERATION PROGRAM

KTF holds full level accreditation as an NGO with the Australian Government's Department of Foreign Affairs and Trade (DFAT). As part of this accreditation, KTF receives funding through the Australian NGO Cooperation Program (ANCP). Our accreditation is maintained via a rigorous evaluation process that is undertaken every five years, involving an in-depth assessment of our management capacity, systems, operations and linkages with the Australian community against a set of agreed criteria. Accreditation ensures the transparent and accountable application of funding to the delivery of effective development programs.



Australian Government
Department of Foreign Affairs and Trade

FEEDBACK & COMPLAINTS

We value the contribution our supporters, donors and volunteers make to our work; so if you have a complaint or any feedback please let us know. We have a process for handling any complaints. Our complaints policy and process can be found on our website www.ktf.ngo or, if you wish to lodge a complaint about KTF, please email info@ktf.ngo or call our office (02) 9252 2992 or send mail to: PO Box 184 Balmain NSW 2041



OUR WANTOKS

OUR BOARD

Thank you to our voluntary board for all of their hard work and commitment to KTF throughout 2017



Ian Kemish AM
Chair, April 2017 - current



Patrick Lindsay AM
Chair, retired April 2017



Elizabeth Carr AM
Deputy Chair



Dr Genevieve Nelson
Chief Executive Officer



Bill James
Director



Stephannie Kirriwom
Direct



Bernie Egan
Treasurer



Wendy Brooks
Director



Yahoo Serious
Director



Dr Andrew Motu
Director

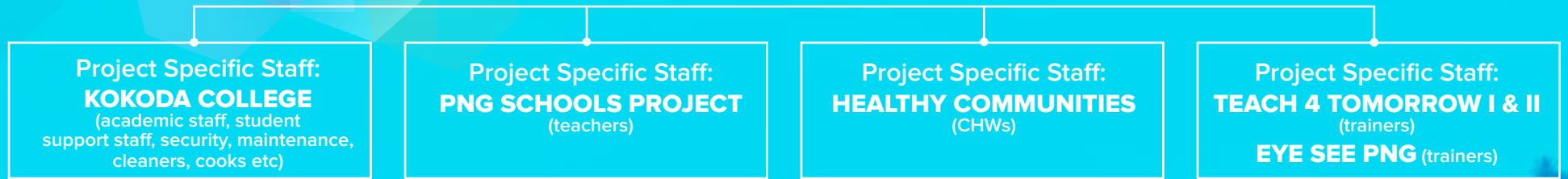


Peter Barrow
Director & Company Secretary -
appointed January 2018

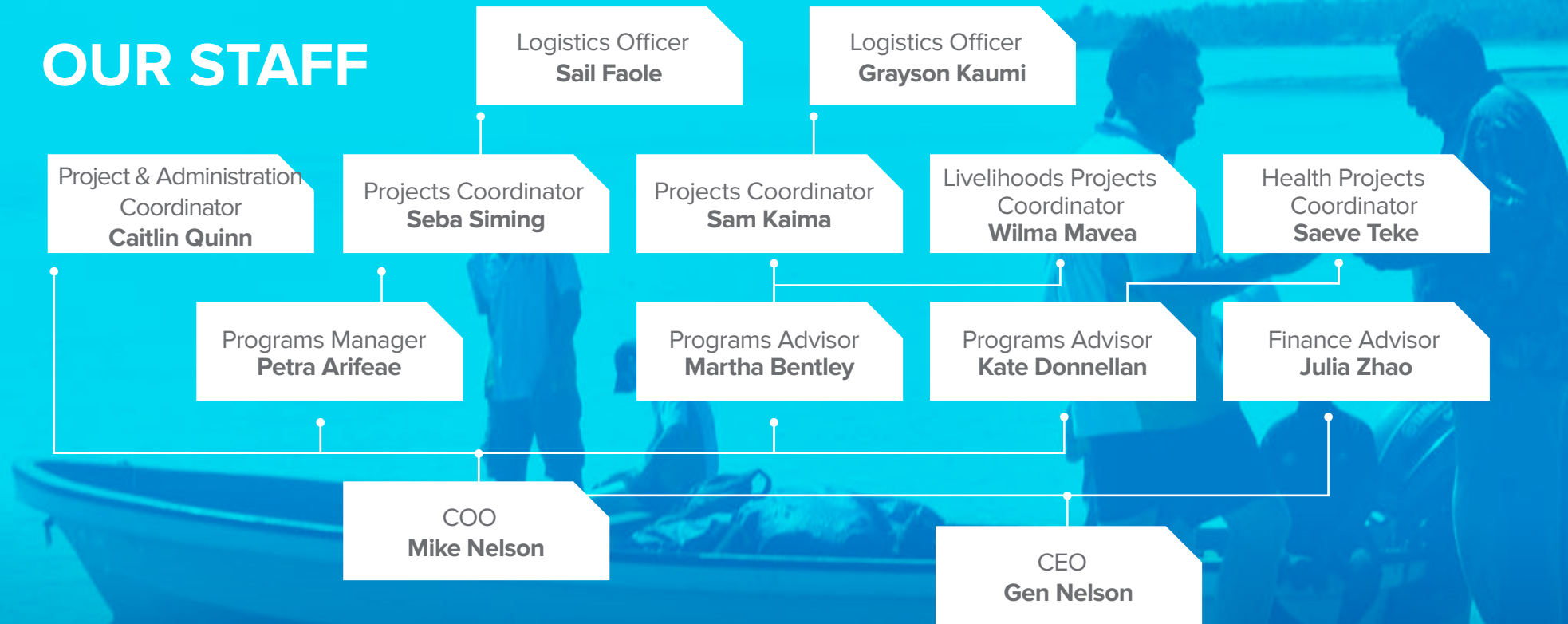
We farewelled our chair, Patrick Lindsay AM, in April 2017 after serving on the board since its inception in 2003 and as chair since 2006. We are indebted to Patrick for his extraordinary vision, generosity, and ongoing support and for being the driving force of the organisation's growth and development over the past decade. Rick exemplifies keeping the spirit of Kokoda alive.

Special thanks also to KTF's retired Company Secretary, Salman Haq, who stepped down in January 2018 after serving in the role for 10 years. Thank you for all your generosity and support over this time.

COMMUNITIES WE SERVE



OUR STAFF



Special thanks to our dedicated staff who all share a passion for assisting Australia's nearest neighbour. In 2017 we welcomed Julia in Sydney and Saeve & Wilma in Port Moresby. In early 2018 we welcomed Martha in Sydney and Sam in Port Moresby. KTF farewells Richard & Tess from the Port Moresby team and wish them every success in their future endeavours.

OUR AMBASSADORS AND PATRON

Thank you to our Patron and incredible team of Ambassadors who continually advise and assist with promoting KTF across Australia, PNG and internationally.



Kostas Constantinou
OBE (Patron)



Cronulla Sharks



Michael Usher



Sharyn Ghidella



Patrick Lindsay AM



Will Genia

CONTACT US



KTF

www.ktf.ngo

Email: info@ktf.ngo

Phone: +61 2 9252 2992

AUS Office: Level 1, 274 Darling Street, Balmain, NSW, 2041

PNG Office: Ground Floor, The Face Building, along Champion Parade, Downtown, NCD

Postal: PO Box 184, Balmain, NSW, 2041





KTF